



# Base Station & Repeater

BS2000



## BS2000 Base Station Radio/System

The BS2000 Base Station & repeaters are designed for two-way radio (voice & data) communication in the VHF & UHF frequency bands.

### Frequencies:

66-88 MHz  
135-174 MHz  
350-410 MHz  
400-470 MHz

### Output Power:

5-25 Watts  
40 Watts  
100 Watts

The BS2000 can be configured to fit the customer's exact requirements in terms of: Frequency Band, Mode of Operation, Signalling System, Data or Voice or a combination of both, Supply Voltage/UPS and Output Power.

The BS2000 can be configured as a stand-alone repeater or as a local or remote controlled base station, with or without repeat imaginable configuration.



# BS2000 Base/Repeater station for the VHF/UHF band

## HIGHLIGHTS

- Voice & Data
- Continuous Operation at full transmitter output power
- Highly flexible built with a modular design
- Weatherproof cabinet for wall mounting
- Rugged construction (aluminium)
- Ideal for any application from a simple analogue home station to an advanced trunked base in a Trunking system
- The RF specifications are outstanding making it suitable for placement in harsh and noisy environments
- This Base station series comes in a robust all weather enclosure or in a 19" rack version with many remote monitoring options making it ideal for isolated sites
- Base stations can be supplied with analogue/IP connection

## Base Station Radios

The Base station and repeater series are designed for two-way voice and data communication and for continuous operation under harsh climatic conditions.

The design of the BS2000 is modular and the cabinets are designed to house different transceivers, modules, I/O interfaces and control units, making the BS2000 very versatile.

The BK001 - 002 - 003 & 004 BS2000 cabinets serve as a weatherproof enclosure where as the BK005 is a 2HU, 19" rack cabinet.

All cabinet types provide an effective heat sink allowing the BS2000 to operate with a 100 % duty cycle.

The BS2000 can be configured to fit the customer's exact requirements in terms of: Frequency Band, Mode of Operation, and Available for VHF and UHF PMR frequency bands.

The transmitter output power is adjustable from 5-25W (Option 40W or 100W). Can withstand operating temperatures from -30 °C to 70 °C

### BS2000 Radio Base Station

The BS2000 Radio Base Station in Simplex/ Semi – Duplex/Duplex version. The Base Station cabinet has been designed to accommodate the transceiver, the power supply and an internal cabling. Further the cabinet provides the possibility to contain a Duplexer an a small communications control/switching unit.

Dimensions: h: 530 x W: 320 x d: 125 mm

**Special developed for 24 hours continuous transmission.**



### BK005 Radio Base Station

Radio Base Station providing the same possibilities as the BS 2000 Radio Base Station, but designed to be installed into a 2HU 19" Rack cabinet.

**Special developed for 24 hours continuous transmission.**



### BK003 Radio Base Station (Mobile)

Radio Base Station in Simplex / Semi-Duplex / duplex version for connection to a 12 V. DC. Supply voltage.

Dimensions: h: 211 mm x W: 317 mm



The standard BS2000 is in conformity with the (European Telecommunication Standards) for private Mobile Radio (PMR).

ETS 300 086 - ETS 300 113 - ETS 300 219 - ETS 300 279

The BS2000 is also CE approved according to: EC directive 89/336/EEC  
The BS2000 cabinets (excl. 19" rack cabinet) meet the IP54 standard for ingress of dust & water.



# BS2000 Base/Repeater station for the VHF/UHF band

## Typical TP Radio Base station/Repeater setup

We at TP Radio are known for our special custom design solutions and below we are mentoring some examples of our most used Base station/repeaters.

We are also able to provide other types of systems as mentioned under system application.

### Repeater for voice communication

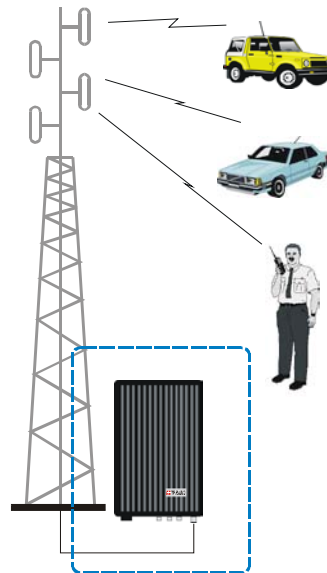
Example 1:

This Turn Key Base station (VHF & UHF) consists of a Cabinet, Duplex transceiver (25W), duplex filter, Power supply and other materials.

Recommended retail prices for this mentioned repeater systems (excluding VAT) is approx.

**€uro 2.505,00 or DKK 18.635,00.**

(Incl. all custom specifications programmed).



RP2001/x

### Repeater with telephone patching

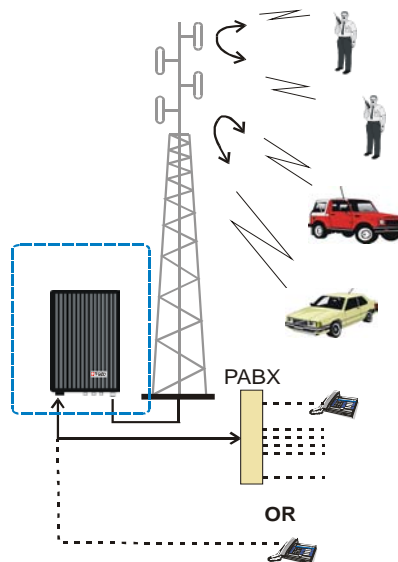
Example 2:

This Turn Key Base station (VHF & UHF) consists of a Cabinet, Duplex transceiver (25W), duplex filter, Power supply, telephone interface unit and other materials.

Recommended retail prices for this mentioned repeater systems (excluding VAT) is approx.

**€uro 3.782,00 or DKK 28.138,00.**

(Incl. all custom specifications programmed).



RP2003/x

### Accessories

Cabinets, Duplex filters, Power Supply, Voltage Converters, Cables (internal & external), Antennas, Interface units, Power modules, Tone modules, Repeater controllers, Channel selection, Circulators....

## SYSTEM APPLICATIONS

- Base Station simplex/duplex
- Repeater Base Stations
- Back to Back Repeater (Link)
- Base Station for Diversity
- Telephone/Fax link systems
- Hot stand-by Base Station
- Multi channel repeater with combiner
- Unattended repeater for voice or/and data communication
- Unattended repeater with telephone patching or/and control console
- Attended Repeater & Base Station with Control Unit and Phone Patch
- Repeater with Phone Patch
- Remote Controlled Base Station/ Repeater
- Point to Multi-point Radio/Data Communication System
- Point to point duplex data link
- Data & voice Point to Point Link
- Private Trunked System

