



ST 10



STD  
10

---

## Chain hoists

Original parts list

---

EN

*Partner of Experts*

**STAHL**  
**Crane Systems**  <sup>®</sup>

**Notes**

# Table of contents

## ST 10 / STD 10

---

### Table of contents

Hoist motor .....	4
Gear .....	6
Chain drive / suspension .....	8
Standard .....	8
Short headroom .....	9
With 2 load chains .....	10
ST 10 / STD 10 bottom hook block .....	11
ST 10 chain box / chain stopper .....	12
Control .....	13
STD .....	14
Mounting sheave supports .....	14
U1, U2 .....	14
U4 .....	15
STD 10 chain box / chain stopper .....	15
STD 10 bottom hook block .....	16
Gear limit switch .....	17
Standard control pendant .....	18
Cable complete - travel drive plug .....	18
US-G 10 trolley .....	19
KFN 10 / KFD 10 trolley .....	20
KFK 10 trolley .....	21
A04 travel motor .....	22
SU-A gear .....	23

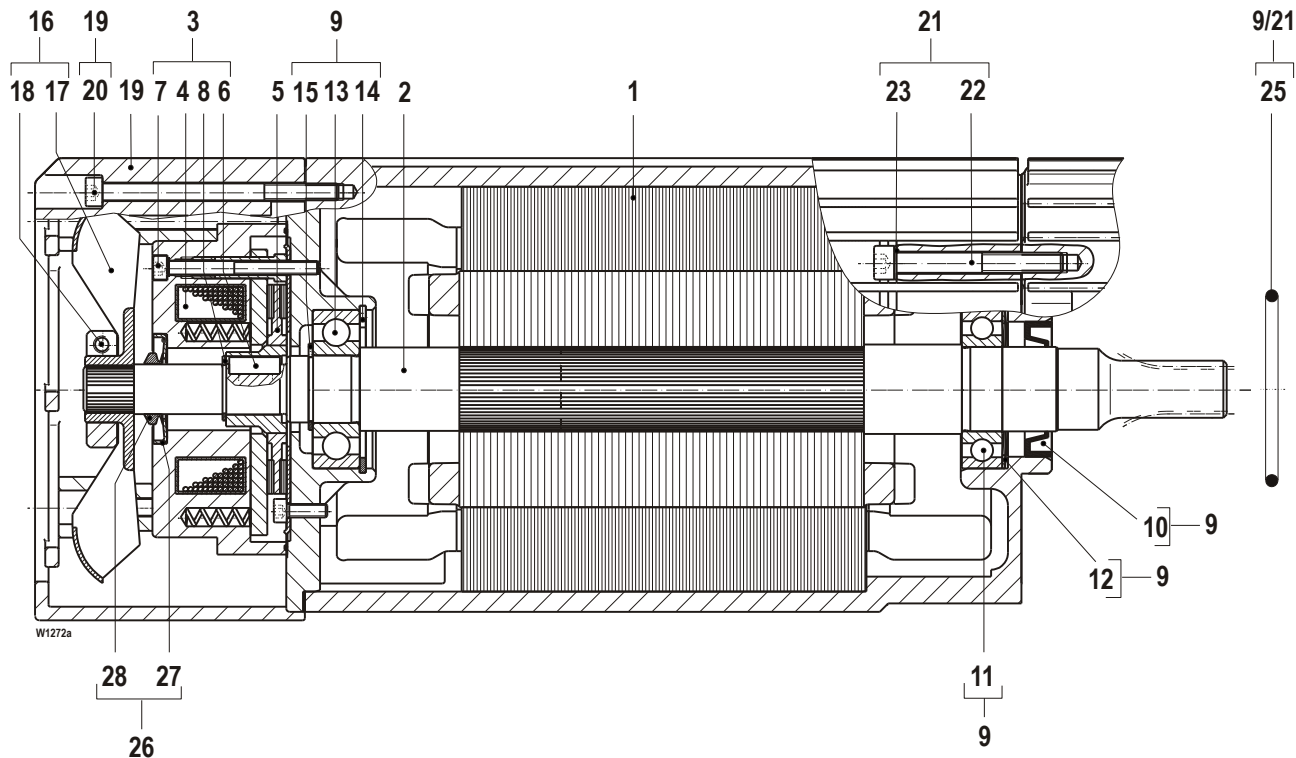
Replacement and repairs may only be carried out by trained personnel.

**Please always state hoist serial number.**

Original parts  
ST 10 / STD 10

Original parts  
ST 10 / STD 10

Hoist motor  
8/2E21, 2E21, 8/2E22, 2E22



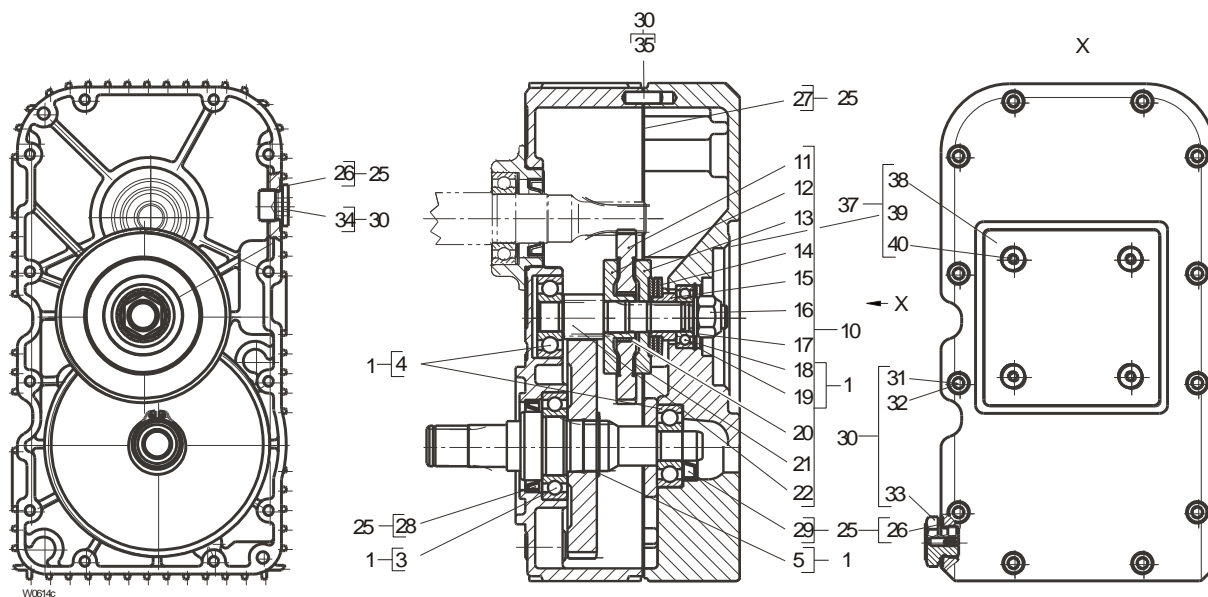
Item	Part no.	Qty.	Description	Specification	Comment
	70000426	1	Motor	ST1005-8/2	8/2E21 Pos.1 – 25 1)
	70000437	1	Motor	ST1005-8	2E21 Pos.1 – 25 1)
	70001359	1	Motor	ST1005-12/3, ST1004-16/4	8/2E22 Pos.1 – 25 1)
	70001360	1	Motor	ST1005-12, ST1004-16	2E22 Pos.1 – 25 1)
3	1432040640	1	Brake set	100 V / 190 – 210 V, 60 Hz	...E21 Pos.4 – 5 2)
3	1432028640	1	Brake set	190 V / 220 – 460 V, 50 Hz	...E21 Pos.4 – 5 2)
3	1432029640	1	Brake set	240 V / 480 – 525 V, 50 Hz	...E21 Pos.4 – 5 2)
3	1432030640	1	Brake set	290 V / 575 – 630 V, 50 Hz	...E21 Pos.4 – 5 2)
3	1432041640	1	Brake set	100 V / 190 – 210 V, 60 Hz	...E22 Pos.4 – 5 2)
3	1432031640	1	Brake set	190 V / 220 – 460 V, 50 Hz	...E22 Pos.4 – 5 2)
3	1432032640	1	Brake set	240 V / 480 – 525 V, 50 Hz	...E22 Pos.4 – 5 2)
3	1432033640	1	Brake set	290 V / 575 – 630 V, 50 Hz	...E22 Pos.4 – 5 2)
4	.....	1	Brake	...E21/...E22	
5	1432053640	1	Brake rotor set		Pos.6 – 8
6	.....	1	Feather key	A5×5×16	DIN 6885
7	.....	3	Screw	M4×50	ISO 4762
8	.....	1	Retaining ring	14×1	DIN 471
9	1432013640	1	Motor bearing set		...E21/...E22 Pos.10 – 15, 25
10	.....	1	Shaft seal	A25×40×7	DIN 3760
11	.....	1	Bearing	6005-2Z	DIN 625
12	.....	1	Disc	40×46,5×0,5	
13	.....	1	Bearing	6204-2Z	DIN 625
14	.....	1	Retaining ring	47×1,75	DIN 472
15	.....	1	Retaining ring	20×1,2	DIN 471
16	1432008640	1	Fan wheel set		...E21/...E22 Pos.17 – 18
17	.....	1	Fan wheel		

**Original parts  
ST 10 / STD 10**

Item	Part no.	Qty.	Description	Specification	Comment
18	.....	1	Straining ring		
19	1432007640	1	End cap set	...E21/...E22	Pos.20
20	.....	4	Screw	M5×70 ISO 4762	
21	1432012640	1	Screw set	...E21/...E22	Pos.22 – 25
22	.....	3	Screw	M6×50 ISO 4762	
23	.....	3	Safety washer	S6	
25	.....	1	Round sealing	50×1,5 DIN 3771	
26	1432043640	1	Sealing set IP 66	..E21/...E22	Pos.27 – 28
27	.....	1	Sealing ring		
28	.....	1	Seal		

- 1) Please state operating voltage, frequency and protection
- 2) Coil voltage / operating voltage

Gear



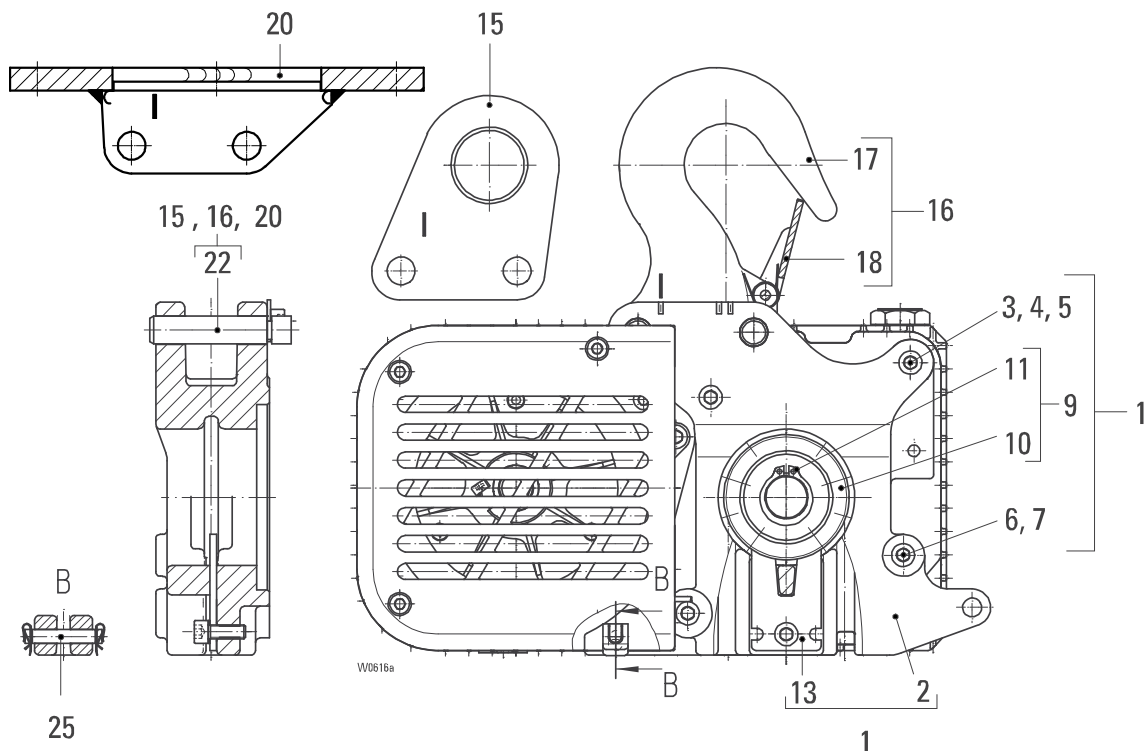
Item	Part no.	Qty.	Description	Specification	Comment
	1432000300	1	Gear	ST1005-8	Pos.1 – 40 1)
	1432001300	1	Gear	ST1005-12	Pos.1 – 40 1)
	1432002300	1	Gear	ST1004-16	Pos.1 – 40 1)
	1432006300	1	Gear for GE-S	ST1005-8	Pos.1 – 40 1)
	1432007300	1	Gear for GE-S	ST1005-12	Pos.1 – 40 1)
	1432008300	1	Gear for GE-S	ST1004-16	Pos.1 – 40 1)
1	1432015640	1	Gear bearing set		Pos.3 – 5, 18 – 19 2), 3)
3	.....	1	Bearing	6006-2RS	DIN 625
4	.....	2	Bearing	6302	DIN 625
5	.....	1	Retaining ring	26×1,2	DIN 471
10	1432000640	1	Slipping clutch set	ST1005-8	Pos.11 – 22, 41 2), 3)
10	1432001640	1	Slipping clutch set	ST1005-12	Pos.11 – 22, 41 2), 3)
10	1432002640	1	Slipping clutch set	ST1004-16	Pos.11 – 22, 41 2), 3)
11	.....	1	Toothed wheel	ST1005-8	z 85
11	.....	1	Toothed wheel	ST1005-12, ST1004-16	z 81
12	.....	1	Coupling disc		
13	.....	1	Coupling disc		
14	.....	3	Belleville spring washer	40,0×20,4×3,1	DIN 2093
15	.....	1	Bushing		
16	.....	1	Nut	M12×1	DIN 985
17	.....	1	Disc	13	ISO 7092
18	.....	1	Bearing	6602-2RS	DIN 625
19	.....	1	Retaining ring	32×1,2	DIN 472
20	.....	1	DU-Bushing	22/25×10	
21	.....	2	Slipping clutch lining		
22	.....	1	Pinion shaft		
25	1432014640	1	Gear seal set		Pos.26 – 29 3)
26	.....	2	Shaft seal	C16×20	
27	.....	1	Seal		
28	.....	1	Shaft seal	A35×47×7	DIN 3760
29	.....	1	Shaft seal	15×35×7	DIN 3760
30	70001369		Screw set		Pos.31 – 35 2)
31	.....	12	Screw	M6×55	ISO 4762-8.8
32	.....	12	Safety washer	S6	
33	.....	1	Locking bolt		

## Original parts ST 10 / STD 10

Item	Part no.	Qty.	Description	Specification		Comment
34	.....	1	Locking bolt	M16×1,5	DIN 908	
35	.....	2	Pin	6m6×18	ISO 2338	
37	1832010640	1	Cover set			Pos.38 – 40
38	.....	1	Cover			
39	.....	1	Round sealing ring	70×2	NB 70	
40	.....	4	Countersunk screw	M6×12		
41	3225016650	1	Gear oil	1000 ml		

- 1) Without gear oil: amount required see operating instruction
- 2) Gear seal set recommended
- 3) Screw set recommended
- 4) Only in gear for GE-S

Chain drive / suspension  
Standard

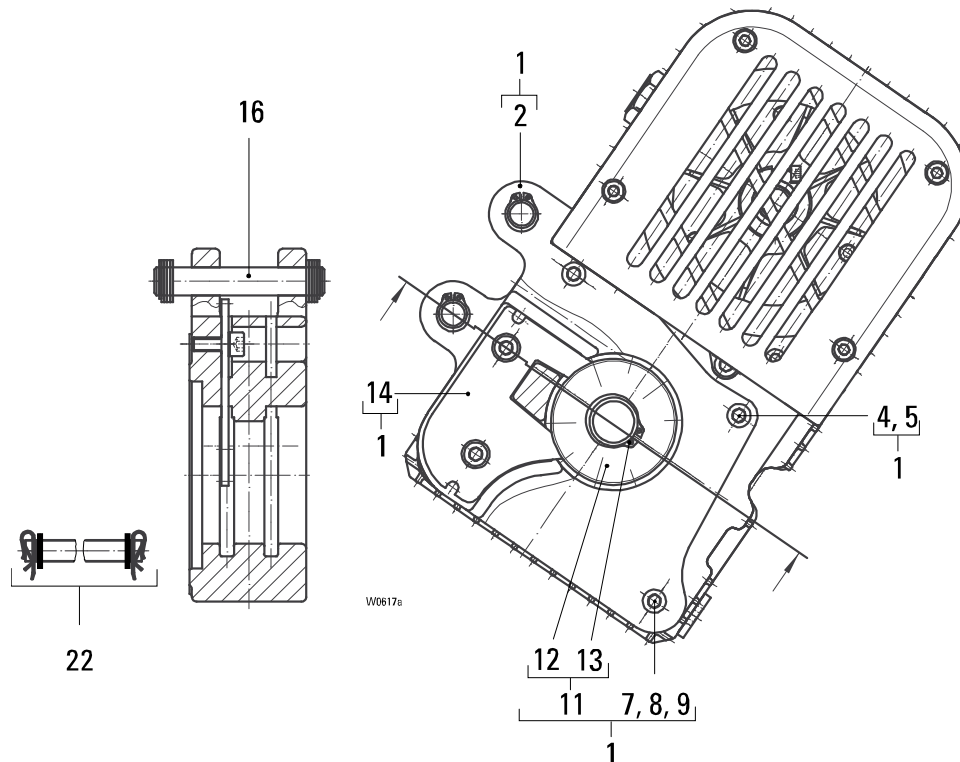


Item	Part no.	Qty.	Description	Specification	Comment
1	1432000410	1	Chain guide set		Pos.2 – 7, 9, 13
1	1432003410	1	Chain guide set	Foot mounted hoist	Pos.2 – 7, 9, 13
1	1432054640	1	Chain guide set	Hardened	Pos.2 – 7, 9, 13
2	.....	1	Chain guide		
3	.....	2	Screw	ISO 4762	
4	.....	2	Safety washer		
5	.....	2	Bushing		
6	.....	2	Screw	ISO 4762	
7	.....	2	Safety washer		
9	1432016640	1	Chain sprocket set		Pos.10 – 11
10	.....	1	Chain sprocket		
11	.....	1	Retaining ring	DIN 471	
13	1432000450	1	Ejector set		
15	1432019640	1	Suspension eye set		Pos.22
16	1432018640	1	Suspension hook set		Pos.17 – 18, 22
17	.....	1	Suspension hook		
18	.....	1	Safety catch		
20	1432020640	1	Suspension set		Pos.22
22	1432000570	1	Suspension bolt set		
25	1432000240	1	Chain suspension set		



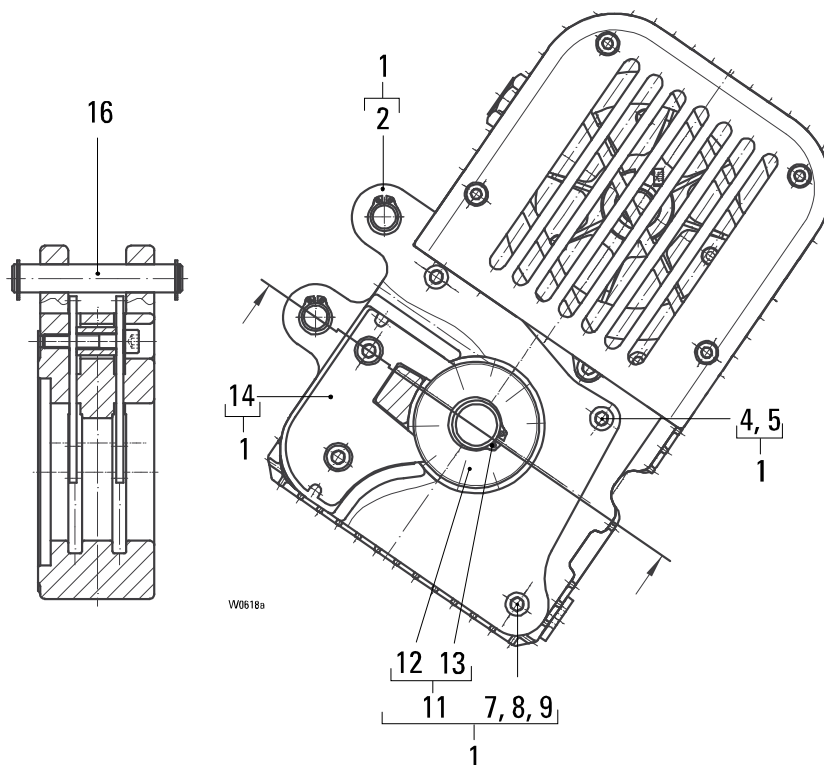
Original parts  
ST 10 / STD 10

Chain drive / suspension  
Short headroom



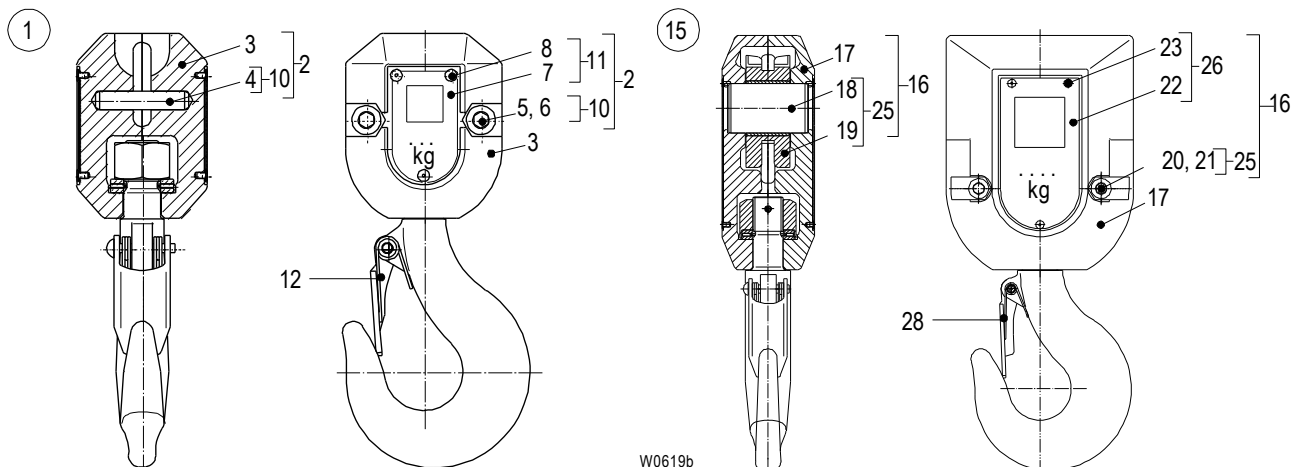
Item	Part no.	Qty.	Description	Specification	Comment
1	1432001410	1	Chain guide set		Pos.2 – 9, 11, 14
2	.....	1	Chain guide		
4	.....	1	Screw	M6×60	ISO 4762
5	.....	1	Safety washer	S6	
7	.....	2	Screw	M6×80	ISO 4762
8	.....	2	Safety washer	S6	
9	.....	2	Bushing	12/7/24,5	
11	1432017640	1	Chain sprocket set		Pos.12 – 13
12	.....	1	Chain sprocket		
13	.....	1	Retaining ring	21×1,2	DIN 471
14	1432001450	1	Ejector set		
16	1432001570	1	Suspension bolt set		
22	1432001240	1	Chain suspension set		

Chain drive / suspension  
With 2 load chains



Item	Part no.	Qty.	Description	Specification	Comment
1	1432002410	1	Chain guide set		Pos.2 – 9, 11, 14
2	.....	1	Chain guide		
4	.....	1	Screw	M6×60	ISO 4762
5	.....	1	Safety washer	S6	
7	.....	2	Screw	M6×80	ISO 4762
8	.....	2	Safety washer	S6	
9	.....	2	Bushing	12/7/24,5	
11	1432017640	1	Chain sprocket set		Pos.12 – 13
12	.....	1	Chain sprocket		
13	.....	1	Retaining ring	21×1,2	DIN 471
14	1432002450	1	Ejector set		
16	1432001570	1	Suspension bolt set		

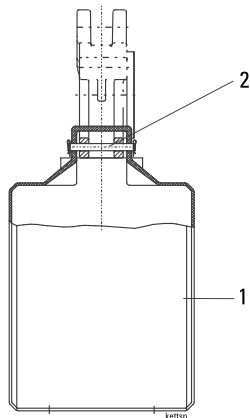
ST 10 / STD 10 bottom hook block



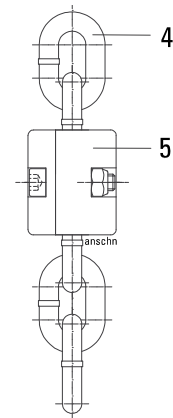
Item	Part no.	Qty.	Description	Specification	Comment
1	1432022590	1	Bottom hook block	1/1 150 kg	Pos.2 – 12
1	1432023590	1	Bottom hook block	1/1 250 kg	Pos.2 – 12
1	1432024590	1	Bottom hook block	1/1 340 kg	Pos.2 – 12
1	1432025590	1	Bottom hook block	1/1 400 kg	Pos.2 – 12
1	1432021590	1	Bottom hook block	1/1 500 kg	Pos.2 – 12
1	1432008590	1	Bottom hook block	1/1 1000 lbs	Pos.2 – 12
2	1432022640	1	Side cheek set		Pos.3 – 10
3	.....	2	Side cheek		
4	.....	1	Bolt		
5	.....	2	Screw	M6×25 ISO 4762-8.8	
6	.....	2	Nut	M6 DIN 985	
7	.....	2	S.W.L.-sign	... kg	
8	.....	4	Blind rivet	3×5	
10	1432021640	1	Bottom hook block bolt set		Pos.4 – 6
11	1432038640	1	S.W.L.-sign		Pos.7 – 8 1)
12	5210060	1	Safety latch		
12	1532050560	5	Safety latch set		
15	1432024500	1	Bottom hook block	2/1 250 kg	Pos.16 – 28
15	1432025500	1	Bottom hook block	2/1 300 kg	Pos.16 – 28
15	1432022500	1	Bottom hook block	2/1 500 kg	Pos.16 – 28
15	1432026500	1	Bottom hook block	2/1 750 kg	Pos.16 – 28
15	1432021500	1	Bottom hook block	2/1 1000 kg	Pos.16 – 28
15	1432027500	1	Bottom hook block	2/1 2000 lbs	Pos.16 – 28
16	1432024640	1	Side cheek set		Pos.17 – 26
17	.....	2	Side cheek		
18	.....	1	Axle		
19	.....	1	Chain pulley		
20	.....	2	Screw	M6×35 ISO 4762-8.8	
21	.....	2	Nut	M6 DIN 985	
22	.....	2	S.W.L.-sign	... kg	
23	.....	4	Blind rivet	3×5	
25	1432023640	1	Bottom hook block chain wheel set		Pos.18 – 21
26	1432039640	1	S.W.L.-sign		Pos.7 – 8 1)
28	5210070	1	Safety latch		
28	1532051560	5	Safety latch set		

1) Please state capacity

ST 10 chain box / chain stopper



Chain box

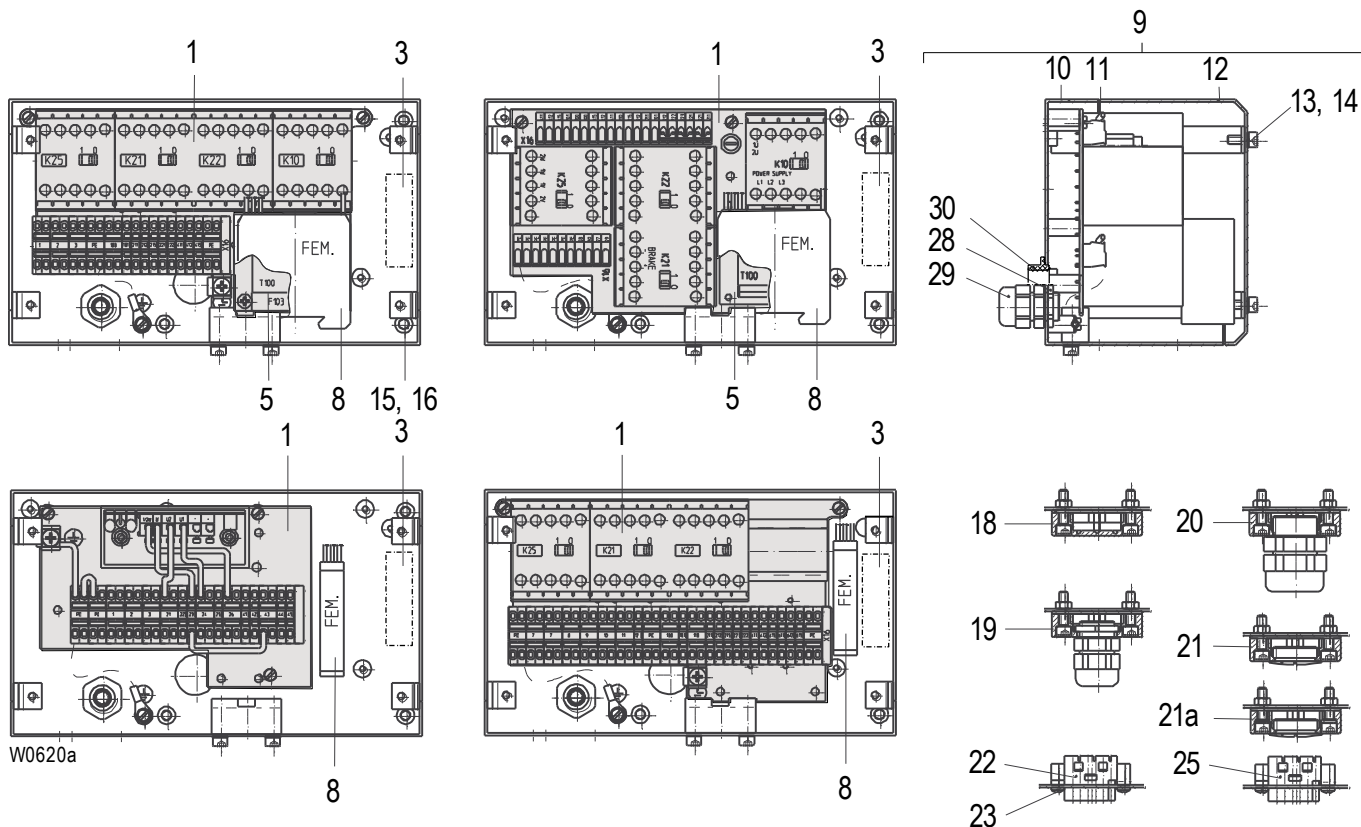


Chain stopper

Item	Part no.	Qty.	Description	Specification		Comment
1	3532204320	1	Chain box	12 m	Plastic	
1	1432008260	1	Chain box	12 m kBh	Plastic	
1	1432005260	1	Chain box	3 m	Textile	
1	1432006260	1	Chain box	6 m	Textile	
1	1432007260	1	Chain box	9 m	Textile	
1	3332026260	1	Chain box	25 m	Textile	
1	1432010260	1	Chain box	25 m kBh	Textile	
1	3332027260	1	Chain box	30 m	Textile	
1	1432011260	1	Chain box	30 m kBh	Textile	
1	3532013260	1	Chain box	50 m	Textile	
1	1432016260	1	Chain box	50 m kBh	Textile	
1	3332032260	1	Chain box	4 m	Sheet steel	
1	3332028260	1	Chain box	12 m	Sheet steel	
1	1432012260	1	Chain box	12 m kBh	Sheet steel	
1	3332029260	1	Chain box	25 m	Sheet steel	
1	1432013260	1	Chain box	25 m kBh	Sheet steel	
1	3332030260	1	Chain box	30 m	Sheet steel	
1	1432014260	1	Chain box	30 m kBh	Sheet steel	
1	3332033260	1	Chain box	60 m	Sheet steel	
1	1432015260	1	Chain box	60 m kBh	Sheet steel	
2	1432000260	1	Suspension set chain box			
4	3310069		Chain	5×16	HE-G80 RAS / H80S	1)
4	3319259		Chain	5×16	60RS	1)
4	3319299		Chain	5×16	HS60	1)
5	1432001270	1	Chain stopper			

1) Please state length  
kBh = short headroom

Control

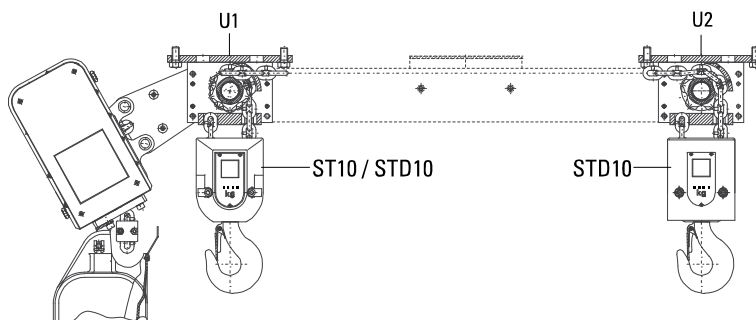


Item	Part no.	Qty.	Description	Specification	Comment
1	.....	1	Control set		1)
3	5785540	1	Rectifier	BR2-575V-2A	
3	5785560	1	Rectifier	BR4-575V-2A	2)
3	5785550	1	Rectifier	CSA BR3-690V-1.2A	
5	5794760	1	Transformer	43 VA 230/400/42 V	
5	5794770	1	Transformer	43 VA 440/500/42 V	
5	5799020	1	Transformer	43 VA 230/490/48 V	
5	5794800	1	Transformer	43 VA 400/500/230 V	
8	5785270	1	FEM2 interference suppression	◆ 800 V	
8	5785250	1	FEM1 interference suppression	◆ ◀▶ -400 V	
8	5785260	1	FEM1 interference suppression	◆ ◀▶ 800 V	
9	1432025640	1	Panel box plastic		Pos.10 – 16, 29 – 30
9	1432026640	1	Panel box steel		Pos.10 – 16, 29 – 30
9	1432062640	1	Panel box CSA		Pos.10 – 16, 29 – 30
18	1432002820	1	Cover plate		
19	1432003820	1	Cover plate	M20×1,5	
20	1432004820	1	Cover plate	M25×1,5	
21	1432005820	1	Cover plate	M25×1,5	
21a	2039016810	1	Cover plate travel drive	M25×1,5	
22	1832008820	1	Plug bushing STH		
	1832013820	1	Plug bushing travel		
23	.....	2	Plastite countersunk screw	4×10	
25	1532001630	1	Power supply plug		

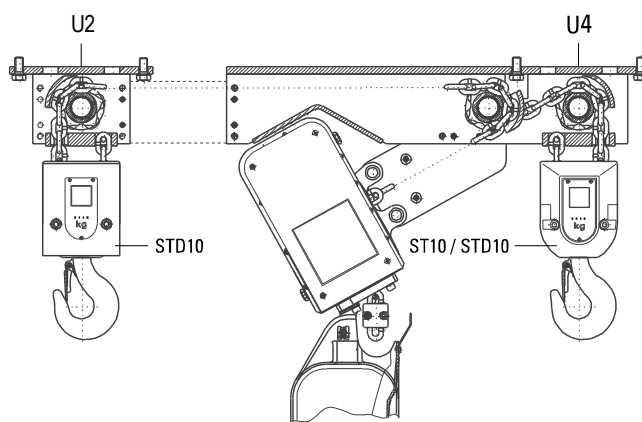
1) Please state serial number  
2) Voltage interchangeable

STD  
Mounting sheave supports

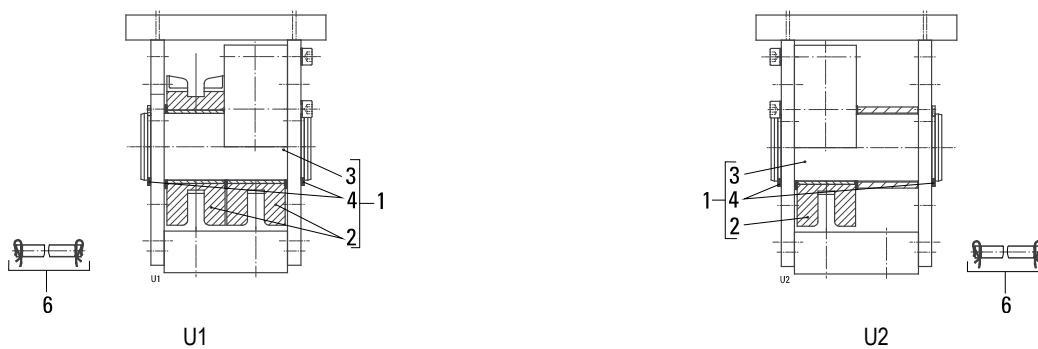
Design E



Design Z



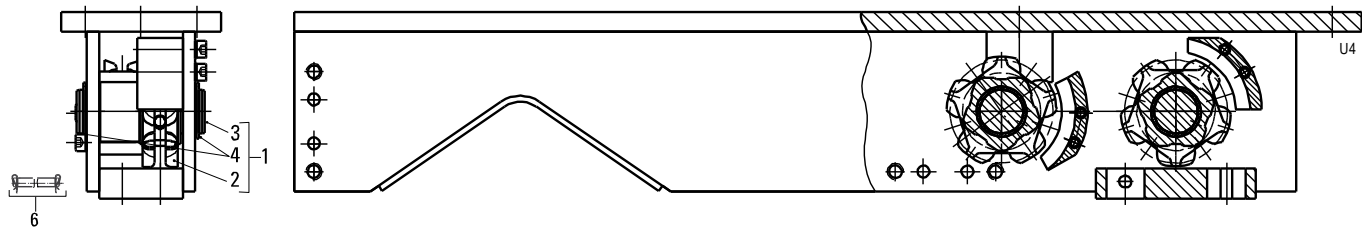
U1, U2



Item	Part no.	Qty.	Description	Specification	Comment
	1432010250	1	Deflection pulley frame	U1	
	1432011250	1	Deflection pulley frame	U2	
1	1432059640	1	Chain pulley set	U1	Pos.2 - 4
1	1432027640		Chain pulley set	U2 + U4	Pos.2 - 4
6	1432002240	1	Chain suspension set	4/2	

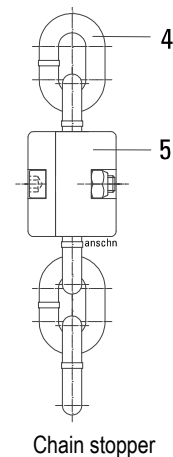
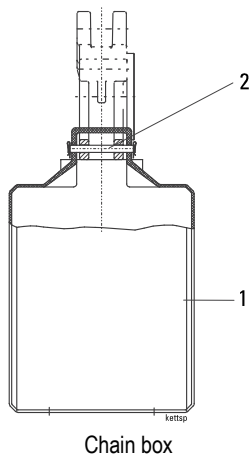
**Original parts**  
**ST 10 / STD 10**

**U4**



Item	Part no.	Qty.	Description	Specification	Comment
	1432012250	1	Deflection pulley frame	U4	
1	1432027640	2	Chain pulley set	U2 + U4	Pos.2 – 4
6	1432002240	1	Chain suspension set	4/2	

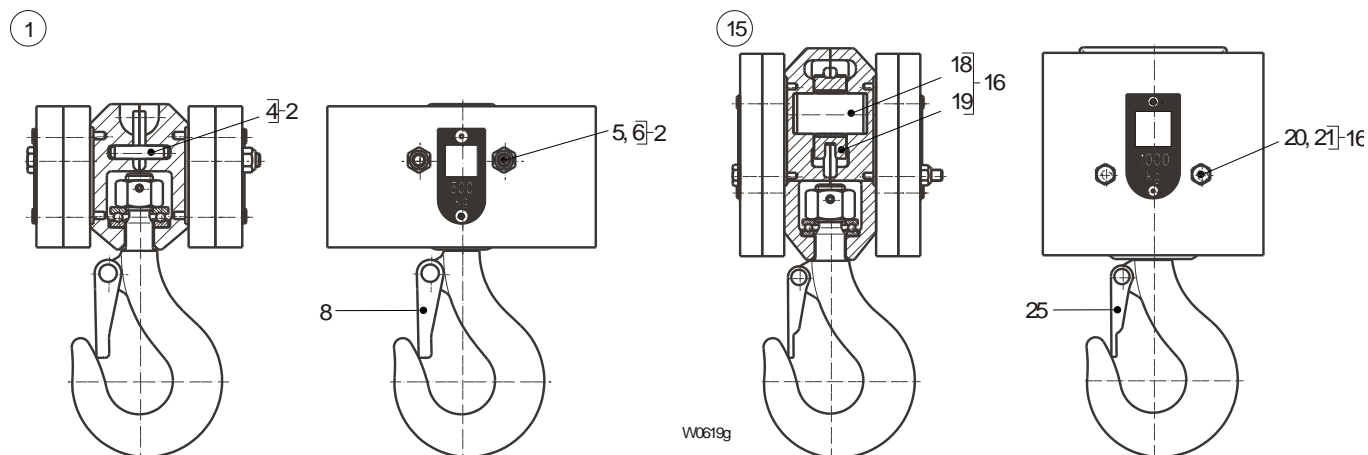
**STD 10 chain box / chain stopper**



Item	Part no.	Qty.	Description	Specification	Comment
1	1432008260	1	Chain box	2×4 m Plastic	1)
1	1432010260	1	Chain box	2×9 m Textile	2)
1	1432011260	1	Chain box	2×13 m Textile	2)
1	1432016260	1	Chain box	2×16 m Textile	2)
1	1432012260	1	Chain box	2×4 m Sheet steel	3)
1	1432013260	1	Chain box	2×9 m Sheet steel	3)
1	1432014260	1	Chain box	2×13 m Sheet steel	3)
1	1432015260	1	Chain box	2×20 m Sheet steel	3)
2	1432000260	1	Suspension set chain box		
4	3310069		Chain	5×16 HE-G80 RAS / H80S	1)
5	1432001270	1	Chain stopper		

1) Please state length

STD 10 bottom hook block

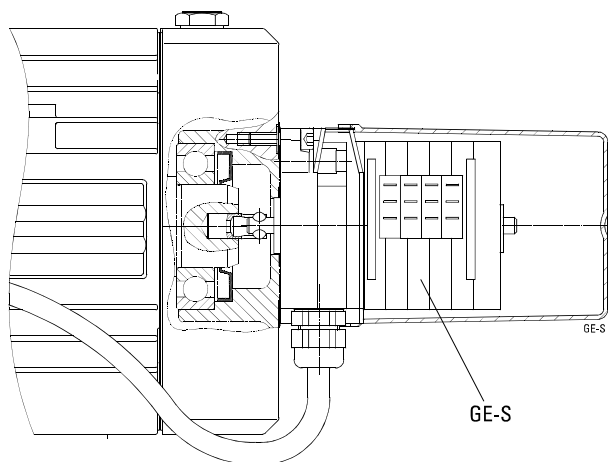


Item	Part no.	Qty.	Description	Specification	Comment
1	1432023590	1	Bottom hook block	2/2, 250 kg without additional weight	Pos.2 – 10
1	1432030590	1	Bottom hook block	2/2, 250 kg with 2 additional weights	Pos.2 – 10
1	1432031590	1	Bottom hook block	2/2, 250 kg with 4 additional weights	Pos.2 – 10
1	1432032590	1	Bottom hook block	2/2, 250 kg with 6 additional weights	Pos.2 – 10
2	1432034640	1	Bottom hook block bolt set		Pos.4 – 6
4	.....	1	Bolt		
5	.....	2	Screw	M6×60 ISO 4014 -8.8	
	.....	2	Screw	M6×100 ISO 4014 -8.8	
6	.....	2	Nut	M6 DIN 985	
8	5210060	1	Safety latch		
8	1532050560	5	Safety latch set		
15	1432022500	1	Bottom hook block	4/2, 500 kg without additional weight	Pos.16 – 25
15	1432028500	1	Bottom hook block	4/2, 500 kg without additional weight	Pos.16 – 25
15	1432029500	1	Bottom hook block	4/2, 500 kg without additional weight	Pos.16 – 25
15	1432030500	1	Bottom hook block	4/2, 500 kg without additional weight	Pos.16 – 25
16	1432036640	1	Bottom hook block chain wheel set		Pos.18 – 21
18	.....	1	Axle		
19	.....	1	Chain pulley		
20	.....	2	Screw	M6×85 ISO 4014 -8.8	
	.....	2	Screw	M6×110 ISO 4014 -8.8	
21	5064320	2	Nut	M6 DIN 985	
25	5210070	1	Safety latch		
25	1532051560	5	Safety latch set		



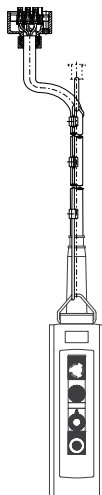
Original parts  
ST 10 / STD 10

Gear limit switch  
GE-S



Item	Part no.	Qty.	Description	Specification	Comment
	5800000		Gear limit switch	GE-S 0750201	
	5800010		Gear limit switch	GE-S 0750401	
	5800040		Gear limit switch	GE-S 1250201	
	5800050		Gear limit switch	GE-S 1250401	

Standard control pendant

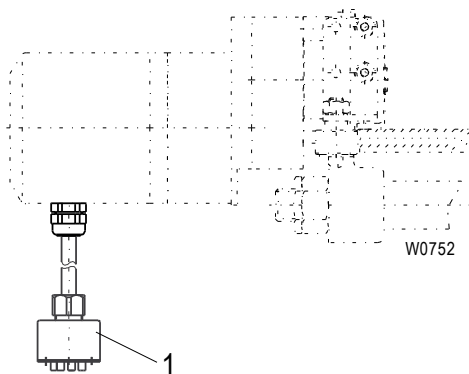


Item	Part no.	Qty.	Description	Specification	Comment
	1739050219	1	Standard control pendant	STH 2109-01	1)
	1739048219	1	Standard control pendant	STH 2109-08	1)
	1739047219	1	Standard control pendant	STH 2209-07	1)
	1739046219	1	Standard control pendant	STH 2209-00	1)
	1739045219	1	Standard control pendant	STH 2209-05	1)
	1739044219	1	Standard control pendant	STH 2209-16	1)
	1739087219	1	Standard control pendant	STH 6102-003	1)
	1739084219	1	Standard control pendant	STH 6102-009	1)
	1739077219	1	Standard control pendant	STH 1202-006	1)
	1739073219	1	Standard control pendant	STH 1202-028	1)
	1739072219	1	Standard control pendant	STH 1202-014	1)
	1739071219	1	Standard control pendant	STH 1202-021	1)

1) When ordering please state length of control cable.

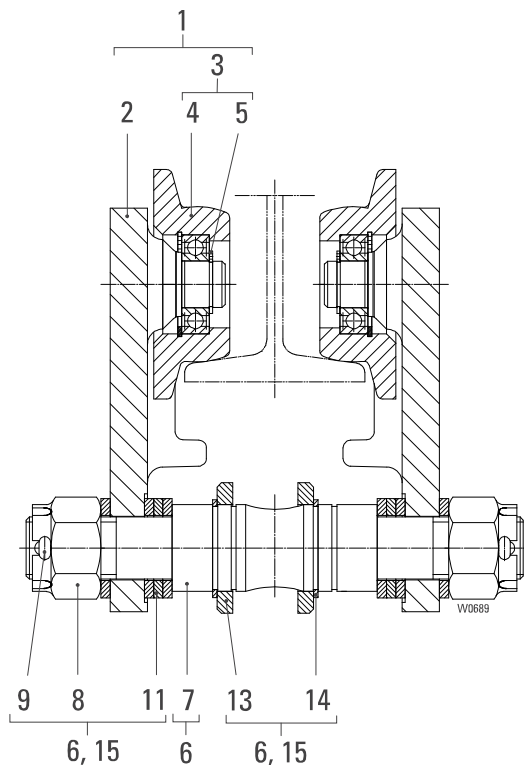
Special control pendants: Please state type when ordering.

Cable complete - travel drive plug



Item	Part no.	Qty.	Description	Specification	Comment
	1532009820	1	Travel drive plug		

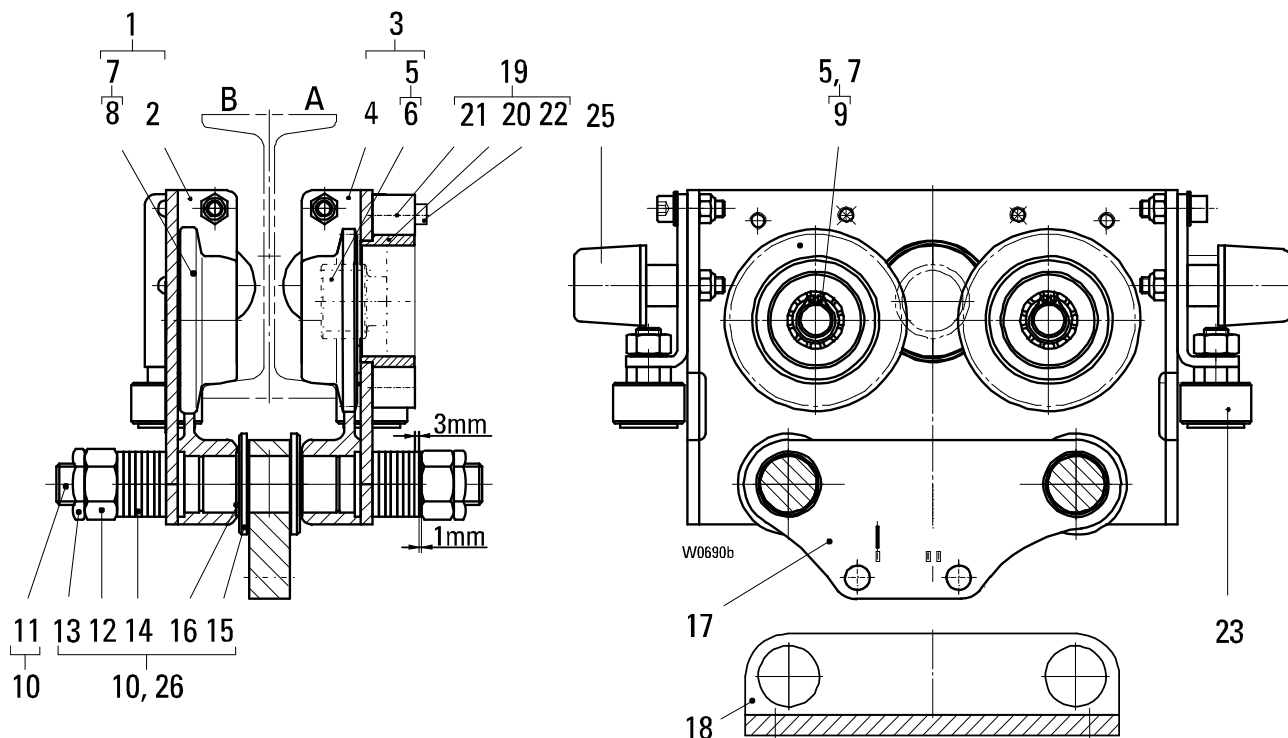
US-G 10 trolley



Item	Part no.	Qty.	Description	Specification	Comment
1	3124011200	2	Carriage side plate compl.		Pos.2 – 3
2	.....	1	Carriage side plate		
3	0125000640	4	Wheel set	B50	Pos.4 – 5
4	.....	1	Wheel		
5	.....	1	Retaining ring	15×1 DIN 471	
6	3124013160	1	Suspension bolt set	42 – 64 mm	Pos.7 – 14 1)
6	3124014160	1	Suspension bolt set	66 – 110 mm	Pos.7 – 14 1)
6	3124015160	1	Suspension bolt set	113 – 154 mm	Pos.7 – 14 1)
6	3124016160	1	Suspension bolt set	160 – 180 mm	Pos.7 – 14 1)
7	.....	1	Suspension bolt		
8	.....	2	Castellated nut	M20×1,5 DIN 935	
9	.....	2	Cotter pin	4×40 ISO 1234	
11	.....	16	Spacer ring	32/21/3	
13	.....	2	Disc	B28 DIN 125	
14	.....	2	Snap ring	SW 28	
15	3124000640	1	Trolley screw set		Pos.8 – 14

1) Flange width

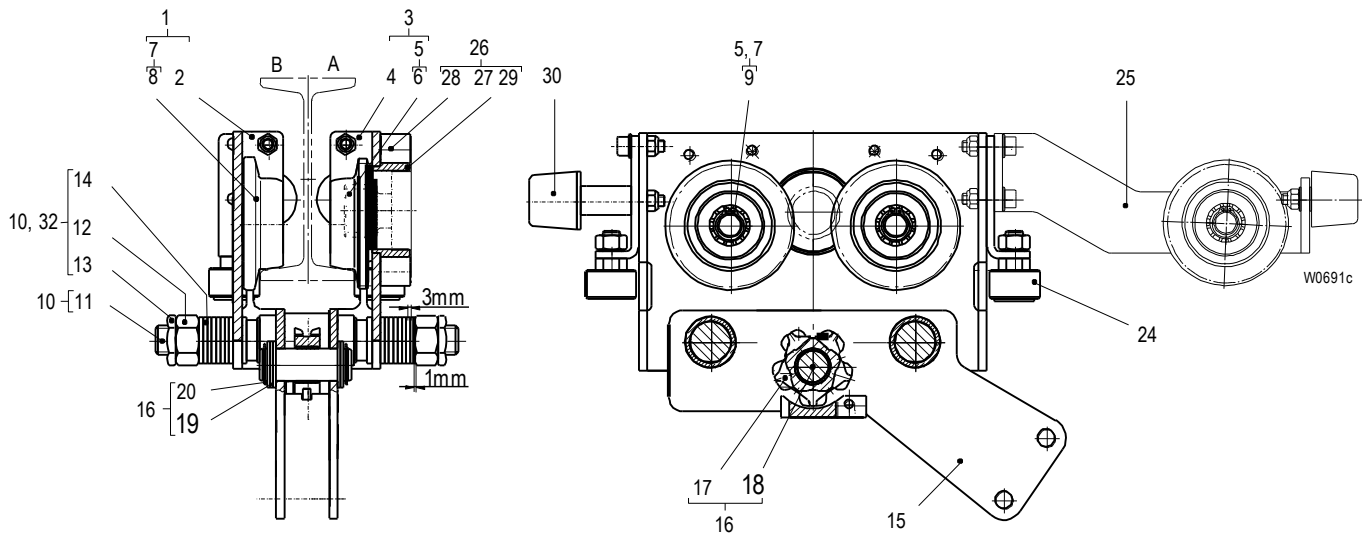
KFN 10 / KFD 10 trolley



Item	Part no.	Qty.	Description	Specification	Comment
1	2224005200	1	Carriage side plate compl.	B63	Pos.2, 7
2	.....	1	Carriage side plate		
3	2224006200	1	Carriage side plate compl.	A63	Pos.4 – 5
4	.....	1	Carriage side plate		
5	0225001640	2	Wheel set	A63	Pos.6, 9
6	.....	1	Wheel		
7	0225000640	2	Wheel set	B63	Pos.8 – 9
8	.....	1	Wheel		
9	.....	1	Retaining ring	17×1	DIN 471
10	2224014160	1	Suspension bolt set	58 – 110 mm	Pos.11 – 16 1)
10	2224015160	1	Suspension bolt set	113 – 154 mm	Pos.11 – 16 1)
10	2224016160	1	Suspension bolt set	155 – 193 mm	Pos.11 – 16 1)
10	2224017160	1	Suspension bolt set	200 – 240 mm	Pos.11 – 16 1)
10	2224018160	1	Suspension bolt set	260 – 300 mm	Pos.11 – 16 1)
11	.....	2	Suspension bolt		
12	.....	4	Nut	M20	ISO 4032
13	.....	4	Locking nut	M20	DIN 7967
14	.....	40	Spacer ring	32/21/3	
15	.....	4	Disc	B28	DIN 125
16	.....	4	Snap ring	SW 28	
17	2224206240	1	Suspension	KFN	
18	2224009270	1	Suspension	KFD	
19	5125000640	1	Trolley motor assembly set		Pos.20 – 22
20	.....	1	Bushing		
21	.....	4	Bushing	20/10/21	
22	.....	4	Screw	M8×35-8.8 Zn	DIN 6912
23	2224006580	1	Guide roller attachment compl.		
25	2224001230	4	Buffer		
26	2224015640	1	Trolley screw set		Pos.12 – 16

1) Flange width

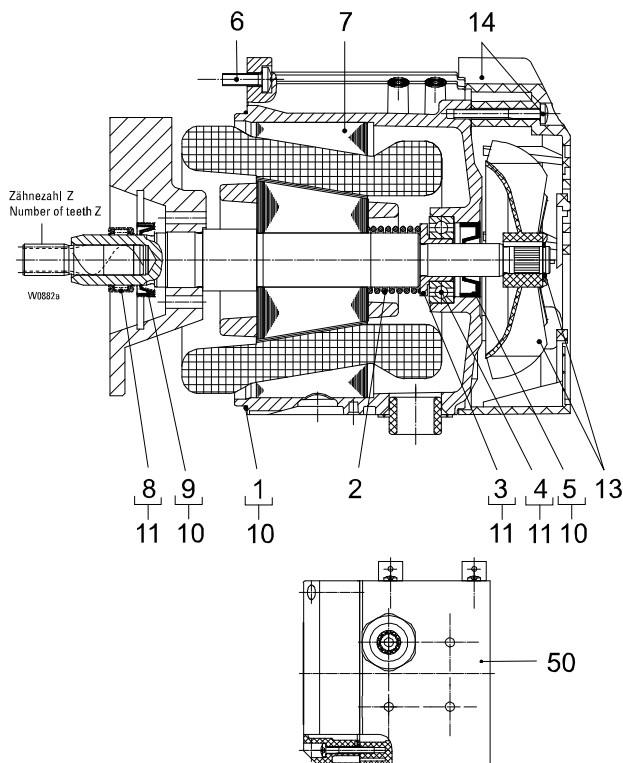
KFK 10 trolley



Item	Part no.	Qty.	Description	Specification	Comment
1	2224005200	1	Carriage side plate compl.	B63	Pos.2, 7
2	.....	1	Carriage side plate		
3	2224006200	1	Carriage side plate compl.	A63	Pos.4 – 5
4	.....	1	Carriage side plate		
5	0225001640	2	Wheel set	A63	Pos.6, 9
6	.....	1	Wheel		
7	0225000640	2	Wheel set	B63	Pos.8 – 9
8	.....	1	Wheel		
9	.....	1	Retaining ring	17×1 DIN 471	
10	2224014160	1	Suspension bolt set	58 – 110 mm	Pos.11 – 14 1)
10	2224015160	1	Suspension bolt set	113 – 154 mm	Pos.11 – 14 1)
10	2224016160	1	Suspension bolt set	155 – 193 mm	Pos.11 – 14 1)
10	2224017160	1	Suspension bolt set	200 – 240 mm	Pos.11 – 14 1)
10	2224018160	1	Suspension bolt set	260 – 300 mm	Pos.11 – 14 1)
11	.....	2	Suspension bolt		
12	.....	4	Nut	M20 ISO 4032	
13	.....	4	Locking nut	M20 DIN 7967	
14	.....	40	Spacer ring		
15	2224010270	1	Suspension	KFK	
16	2224016640	1	Trolley chain drive set		Pos.17 – 20
17	.....	1	Chain pulley		
18	.....	1	Axle		
19	.....	5	Supporting ring	S22×32×2	
20	.....	2	Retaining ring	22×1,2 DIN 471	
24	2224006580	1	Guide roller attachment compl.		
25	2224000190	1	Supporting roller (right)		
25a	2224001190	1	Supporting roller (left)		
26	5125000640	1	Trolley motor assembly set		Pos.27 – 29
27	.....	1	Bushing		
28	.....	4	Bushing	20/10/21	
29	.....	4	Screw	M8×35-8.8 Zn DIN 6912	
30	2224001230	2	Buffer		
32	2224015640	1	Trolley screw set		Pos.12 – 14

1) Flange width

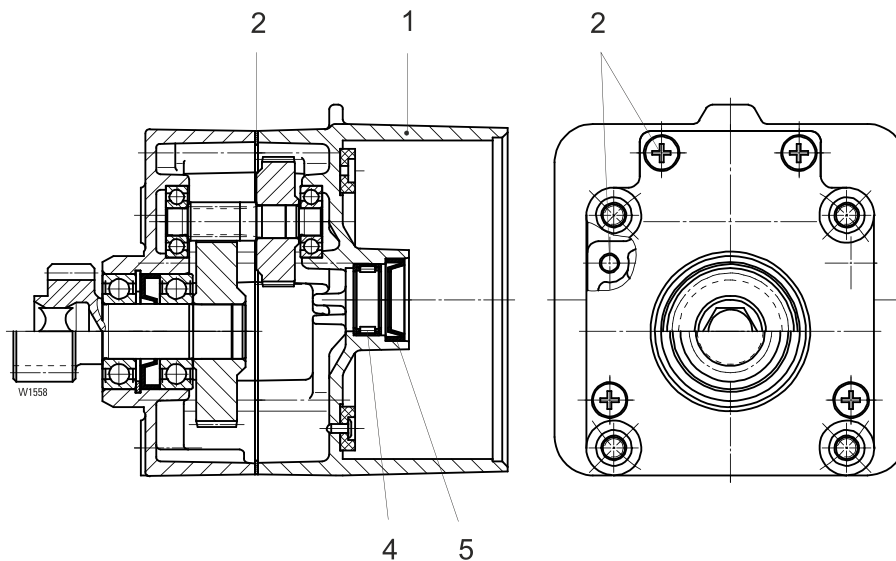
A04 travel motor



Item	Part no.	Qty.	Description	Specification	Comment
	70001470	1	Motor	2A04 S Z=11	Pos.1 – 14 1)
	70001480	1	Motor	2A04 S Z=13	Pos.1 – 14 1)
	70001481	1	Motor	2A04 S Z=15	Pos.1 – 14 1)
	70001490	1	Motor	2A04 S Z=19	Pos.1 – 14 1)
	70001489	1	Motor	2/8A04 S Z=11	Pos.1 – 14 1)
	70001492	1	Motor	2/8A04 S Z=13	Pos.1 – 14 1)
	70001493	1	Motor	2/8A04 S Z=15	Pos.1 – 14 1)
	70001498	1	Motor	2/8A04 S Z=19	Pos.1 – 14 1)
	70001499	1	Motor	4A04 S Z=13	Pos.1 – 14 1)
	70001500	1	Motor	4A04 S Z=19	Pos.1 – 14 1)
1	.....	1	Round sealing ring	116×1,5	
2	3433101940	1	Pressure spring		
3	.....	1	Bushing		
4	.....	1	Grooved ball bearing	6003-2RS	
5	.....	1	Shaft seal	13×30×8	
6	.....	4	Screw	5×16	DIN 7500
7	.....	1	Stator		
8	.....	1	Needle bush		
9	.....	1	Shaft seal	20×30×7	
10	3433000640	1	Motor seal set		
11	3433001640	1	Motor bearing set		
13	3433000170	1	Fan wheel set		
14	3433000190	1	Fan cover set		
50	1432011910	1	Terminal box		

1) Please state operating voltage and frequency

SU-A gear



Item	Part no.	Qty.	Description	Specification	Comment
	5125012290	1	Gear complete	SU-A 14 4. 110	Pos.1 – 2
	5125013290	1	Gear complete	SU-A 14 4. 108	Pos.1 – 2
	5125014290	1	Gear complete	SU-A 14 4. 106	Pos.1 – 2
	5125015290	1	Gear complete	SU-A 14 4. 104	Pos.1 – 2
	5125034290	1	Gear complete	SU-A 14 4. 222	Pos.1 – 2
	5125035290	1	Gear complete	SU-A 14 4. 220	Pos.1 – 2
	5125036290	1	Gear complete	SU-A 14 4. 218	Pos.1 – 2
	5125037290	1	Gear complete	SU-A 14 4. 216	Pos.1 – 2
	5125038290	1	Gear complete	SU-A 14 4. 214	Pos.1 – 2
	5125039290	1	Gear complete	SU-A 14 4. 212	Pos.1 – 2
1	5125079370	1	Gear box with brake lining	SU-A 14 4. 1..	Pos.4 – 5
1	5125078370	1	Gear box with brake lining	SU-S 14 4. 2..	Pos.4 – 5
2	5125001640	1	Gear seal set		
4	.....	1	Needle bush	HK2010	1)
5	.....	1	Shaft seal	20×30×7	2)

1) See pos.11 page 22  
2) See pos.10 page 22

→ [www.stahlcranes.com](http://www.stahlcranes.com)

STAHL CraneSystems GmbH  
Daimlerstr. 6, 74653 Künzelsau, Germany  
Tel +49 7940 128-0, Fax +49 7940 55665  
[marketing.scs@stahlcranes.com](mailto:marketing.scs@stahlcranes.com)

*Partner of Experts*

**STAHL**  <sup>®</sup>  
**CraneSystems**